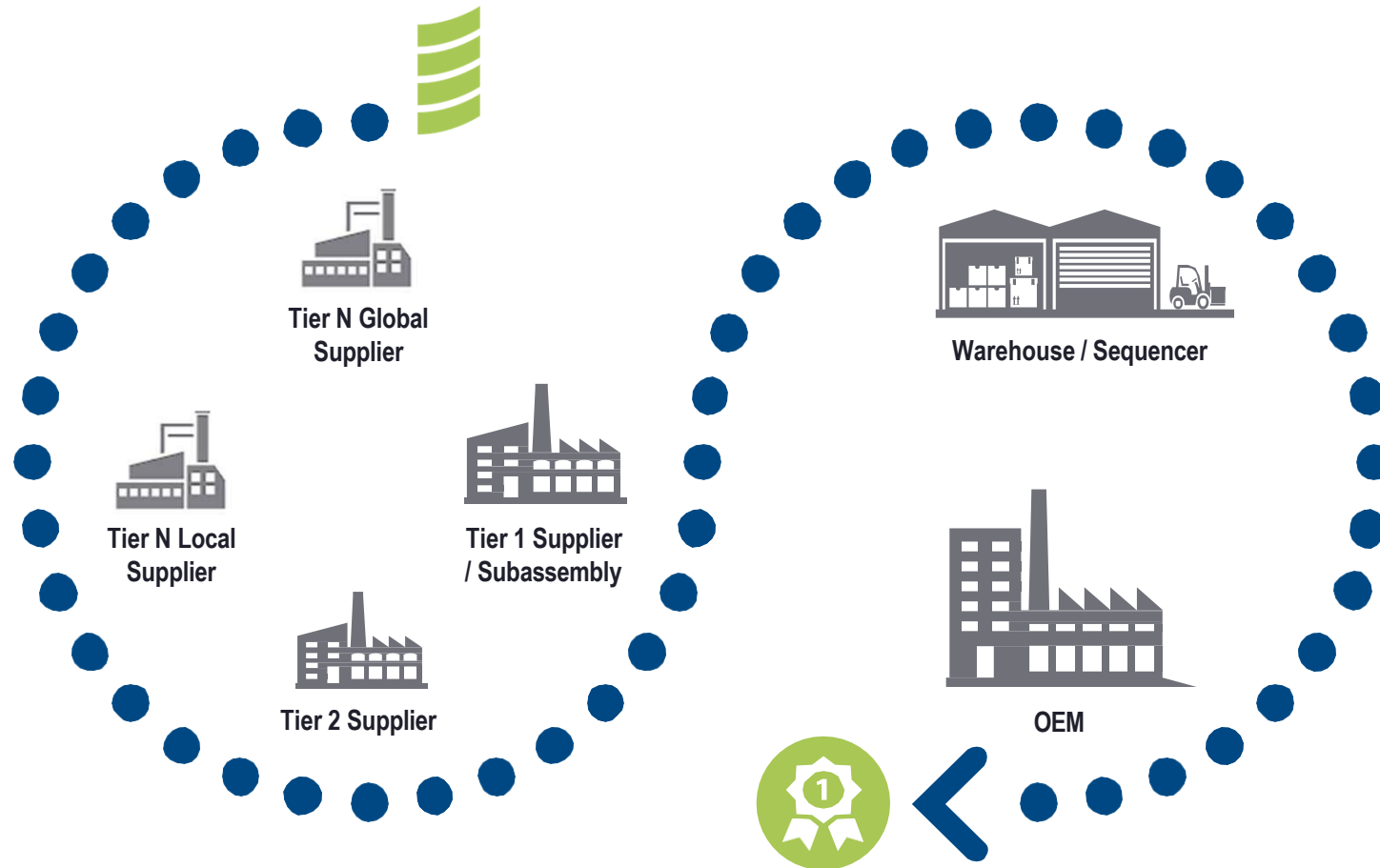


# TRIGO COMPANY OVERVIEW

---

2024

# ABOUT US



**Our mission is to provide global quality solutions which optimize the performance of industrial supply chains.**

# VERTICAL MARKETS SERVED



**Aerospace & Defense**



**Automotive**



**Heavy Transportation**



**Rail, Naval & Marine**



**Motorcycle & Recreational Vehicles**



**Electronics & Other Manufacturing**

# SERVICES

## Advanced Services

Global network of local experts with unique industry insights



*Consulting  
& Auditing*



*Training & Coaching*



*Delivery Assurance*



*Quality Engineering*



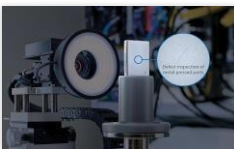
*Resident Engineering*

## Technology Solutions

Innovative technology solutions for superior quality management



*Data Analytics & AI*



*Automated Inspection*



*Augmented Reality*



*Digital Quality Tools*

## Mainstream Inspection and Supply Chain Services

Unique breadth of inspection & technical rework capabilities with 10,000 on-site professionals in 25 countries

*Inspection*

*Containment*

*Technical Rework*

*Production Support*

*VMI & On-Site logistics*

*And more...*



# KEY FIGURES

**20+** YEARS EXPERIENCE  
SUPPORTING OUR LOYAL CUSTOMERS

**25+** COUNTRIES  
LOCAL RESOURCES AVAILABLE 24/7

**10000+** QUALITY PROFESSIONALS  
WORLDWIDE

**2500+** QUALITY ENGINEERS  
AND TECHNICIANS:  
ENGINEERS, AUDITORS, TRAINERS, SUBJECT MATTER  
EXPERTS, RESIDENT ENGINEERS, QUALITY LIAISONS,  
TECHNICIANS, SITE MANAGERS

PERMANENT TEAMS IN  
**550+** MANUFACTURING SITES  
SUPPORTING 160+ OEM PLANTS

TRUSTED BY  
**100%** OF THE TOP 10 AUTOMOTIVE AND  
AEROSPACE OEMS AND THE TOP 5  
HEAVY TRANSPORTATION OEMS

**2000+** SUPPLIERS  
WHO RELY ON US TO DELIVER QUALITY  
SOLUTIONS AROUND THE GLOBE

ANNUAL REVENUE  
**420M€/\$465M**

# GEOGRAPHIC FOOTPRINT

## AMERICAS

Brazil | Canada | Mexico | USA

## AFRICA

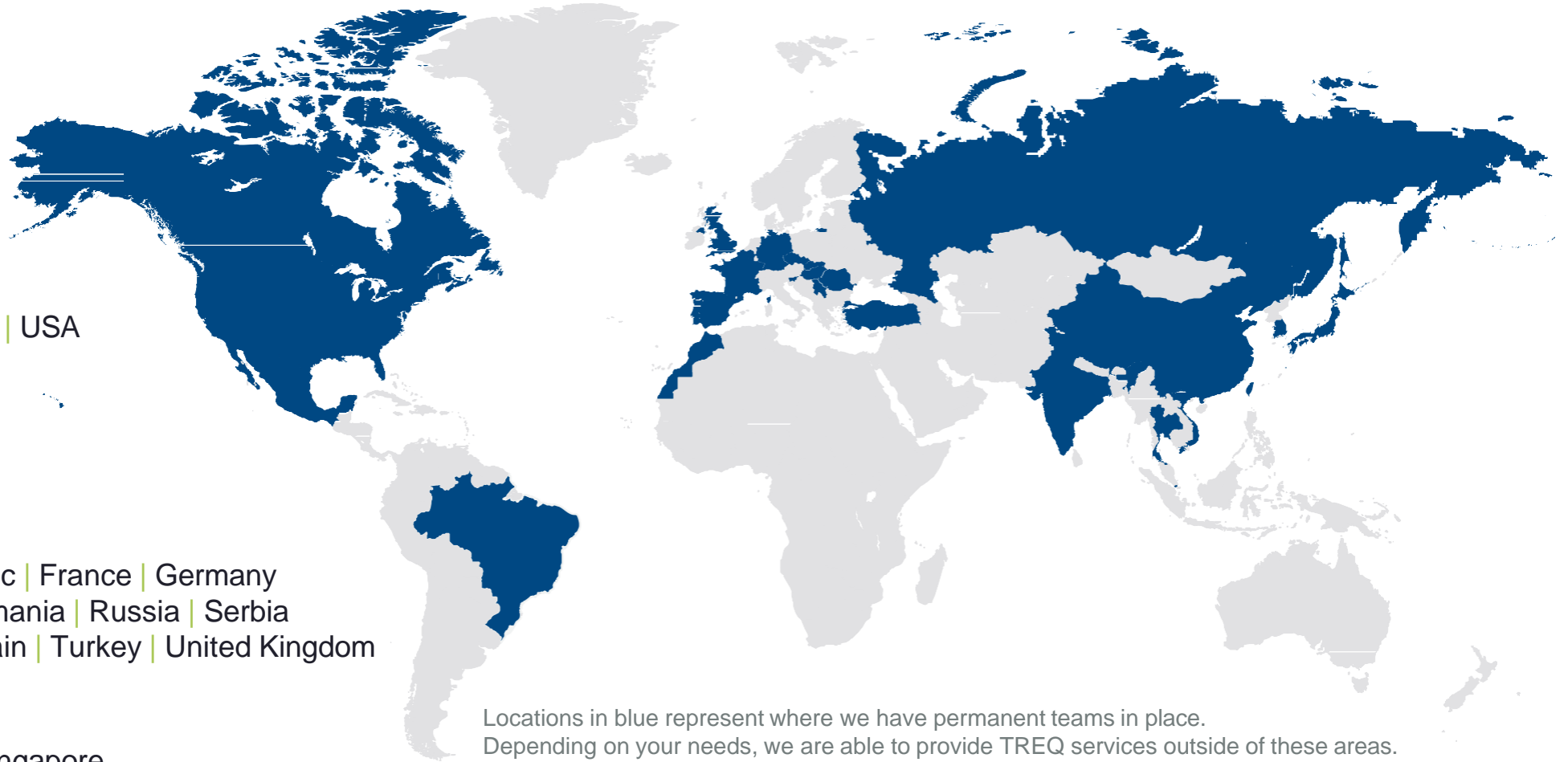
Morocco

## EUROPE

Belgium | Czech Republic | France | Germany  
Hungary | Portugal | Romania | Russia | Serbia  
Slovakia | Slovenia | Spain | Turkey | United Kingdom

## ASIA

China | India | Japan | Singapore  
South Korea | Thailand | Vietnam



Locations in blue represent where we have permanent teams in place.  
Depending on your needs, we are able to provide TREQ services outside of these areas.



# AMERICAS FOOTPRINT

## TRIGO BRAZIL

### Regions Served:

- Piracicaba
- Limeira
- Itacemapolis
- Campinas
- Sao Paulo
- Pernambuco
- Rio de Janeiro

### Facilities:

- São Paulo Brazil
- Pernambuco Warehouse
- Rio de Janeiro Warehouse

## TRIGO CANADA

### Province Served:

Ontario, Canada

### Facilities:

- Pickering, Ontario
- Guelph, Ontario Warehouse
- Ingersoll, Ontario Warehouse
- Mississauga, Ontario Warehouse
- Whitby, Ontario Warehouse
- Windsor, Ontario Warehouse

## TRIGO MÉXICO

### States Served:

- Aguascalientes
- Baja California
- Chihuahua
- CDMX
- Coahuila
- Estado de México
- Guanajuato
- Jalisco
- Morelos
- Nuevo Leon
- Puebla
- Querétaro

- San Luis Potosi
- Sonora
- Tamaulipas

### Facilities:

- San Luis Potosí, México

## TRIGO USA

### States Served:

- Alabama
- California
- Georgia
- Illinois
- Indiana
- Iowa
- Kansas
- Michigan
- Minnesota
- Mississippi
- North Carolina
- Ohio
- South Carolina
- Tennessee
- Texas
- Wisconsin

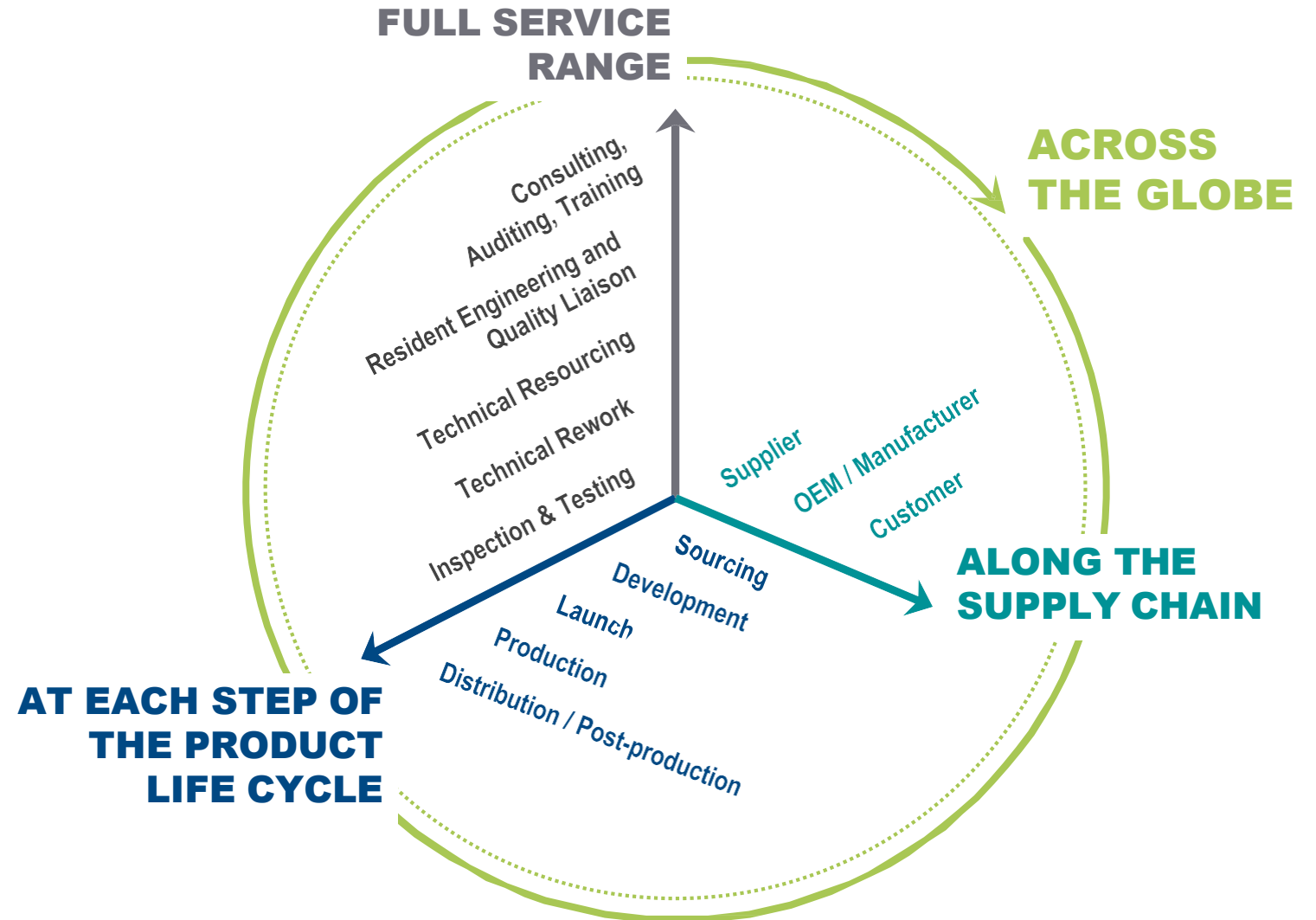
### Facilities:

- Shelby Twp, Michigan Office & Warehouse
- Peoria, Illinois Office
- Greer, South Carolina Office
- California Office – Aerospace NA
- Indiana Warehouse
- Kansas Warehouse
- Wisconsin Warehouse
- South Carolina Warehouse (x3)
- Texas Warehouse
- Illinois Warehouse (x3)



# OUR APPROACH

We focus on helping our customers prevent potential quality challenges, as well as, solving them down to the root cause if and when they occur.



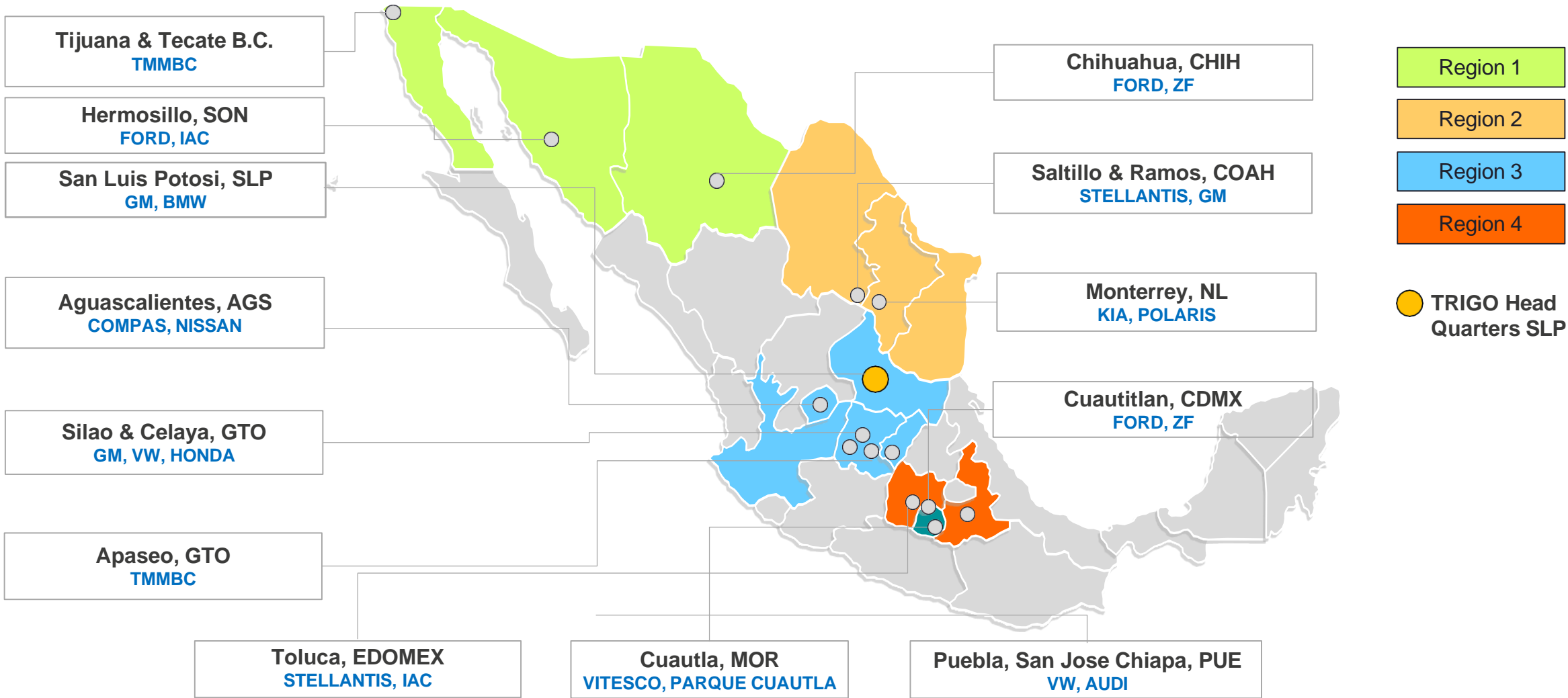


# OUR SERVICE PORTFOLIO

	CORRECTIVE Quality Services	PREVENTIVE Quality Services	SUPPLY CHAIN and LOGISTICS Services
TECHNICAL SERVICES	<ul style="list-style-type: none"> <li>▪ Sorting &amp; Containment</li> <li>▪ Quality Firewall - CS1/2/3</li> <li>▪ Yard Management</li> <li>▪ Technical Rework</li> <li>▪ Reflashing</li> <li>▪ Retrofit Campaigns</li> </ul>	<ul style="list-style-type: none"> <li>▪ Preshipment / Source Inspection</li> <li>▪ Incoming Inspection</li> <li>▪ In Process / Final Inspection</li> <li>▪ Testing</li> <li>▪ Calibration &amp; 3D Measurement</li> </ul>	<ul style="list-style-type: none"> <li>▪ VMI (Vendor Managed Inventory)</li> <li>▪ Kitting, Sequencing, Pre-assembly</li> <li>▪ Expediting</li> </ul>
MANAGEMENT SERVICES	<ul style="list-style-type: none"> <li>▪ Crisis Management</li> <li>▪ Constraint Management</li> <li>▪ Non Conformity Management</li> <li>▪ Root Cause Analysis</li> <li>▪ Technical Resourcing</li> </ul>	<ul style="list-style-type: none"> <li>▪ FAI / PPAP / APQP support</li> <li>▪ Supplier Evaluation &amp; Audit</li> <li>▪ New Supplier Assessment</li> <li>▪ Training Services</li> <li>▪ Configuration Management</li> <li>▪ Launch Support</li> <li>▪ Technical Resourcing</li> </ul>	<ul style="list-style-type: none"> <li>▪ Supply Chain Management</li> <li>▪ Supplier Monitoring</li> <li>▪ Supplier Assessment</li> <li>▪ Supplier Development</li> <li>▪ Turnaround Management</li> <li>▪ Warranty Management</li> <li>▪ Vehicle Remarketing</li> </ul>

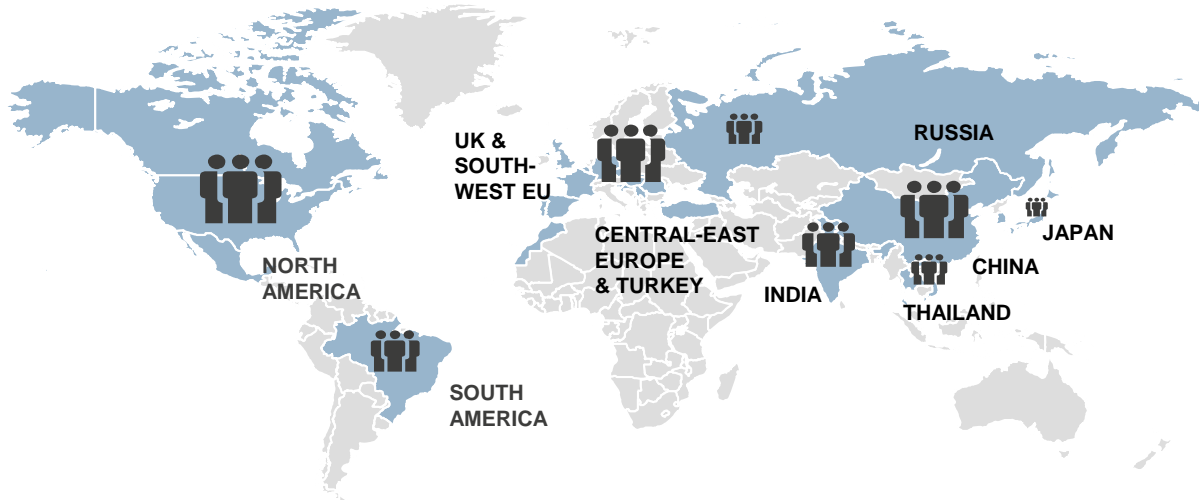
▪ Resident Engineering and Quality Liaison

# RESIDENT ENGINEERS IN MEXICO



# CONSULTING & ENGINEERING

## FOOTPRINT



### SUBJECT MATTER EXPERTISE:

- Supplier Development
- APQP-PPAP
- SPC, MSA, PFMEA, CP
- QMS – IATF16949/VDA6.3/QSB +/BIQS, ISO140001 etc.
- Lean Manufacturing & 6 Sigma
- 8D & Problem Solving (Drill Deep & Wide)
- Fast Response & QRQC
- Capacity Assessment

### COMMODITY EXPERTISE:

- Casting
- Stamping
- Forging
- Machining
- Plastic Injection
- Molding
- Blow molding
- Extruding & vulcanizing
- SMT
- Soldering
- Welding
- Plating & Coating
- Painting
- Heat Treat
- Complex Assemblies

## FACTS & FIGURES

**110** CONSULTANTS / EXPERTS

**45** AUDITORS      **50** TRAINERS

**20** COUNTRIES

**80+** TRAINING PROGRAMS

### TRAINING IN SEVERAL LANGUAGES

EN, FR, SP, CN, HU, RO

### CERTIFIED AUDITORS BY 4 OEMS

(PSA, DM, FCA, Renault)

# STANDARDISED FRAMEWORK – (SEPARATE WORKSHOP)

## RESPONSIBILITY

# Supplier - Enquiry / RFQ  
# Trigo- Enquiry Reply - Trigo WMEA C&E

# Amend Enquiry Reply - Trigo WMEA C&E  
# Customer - OEM.

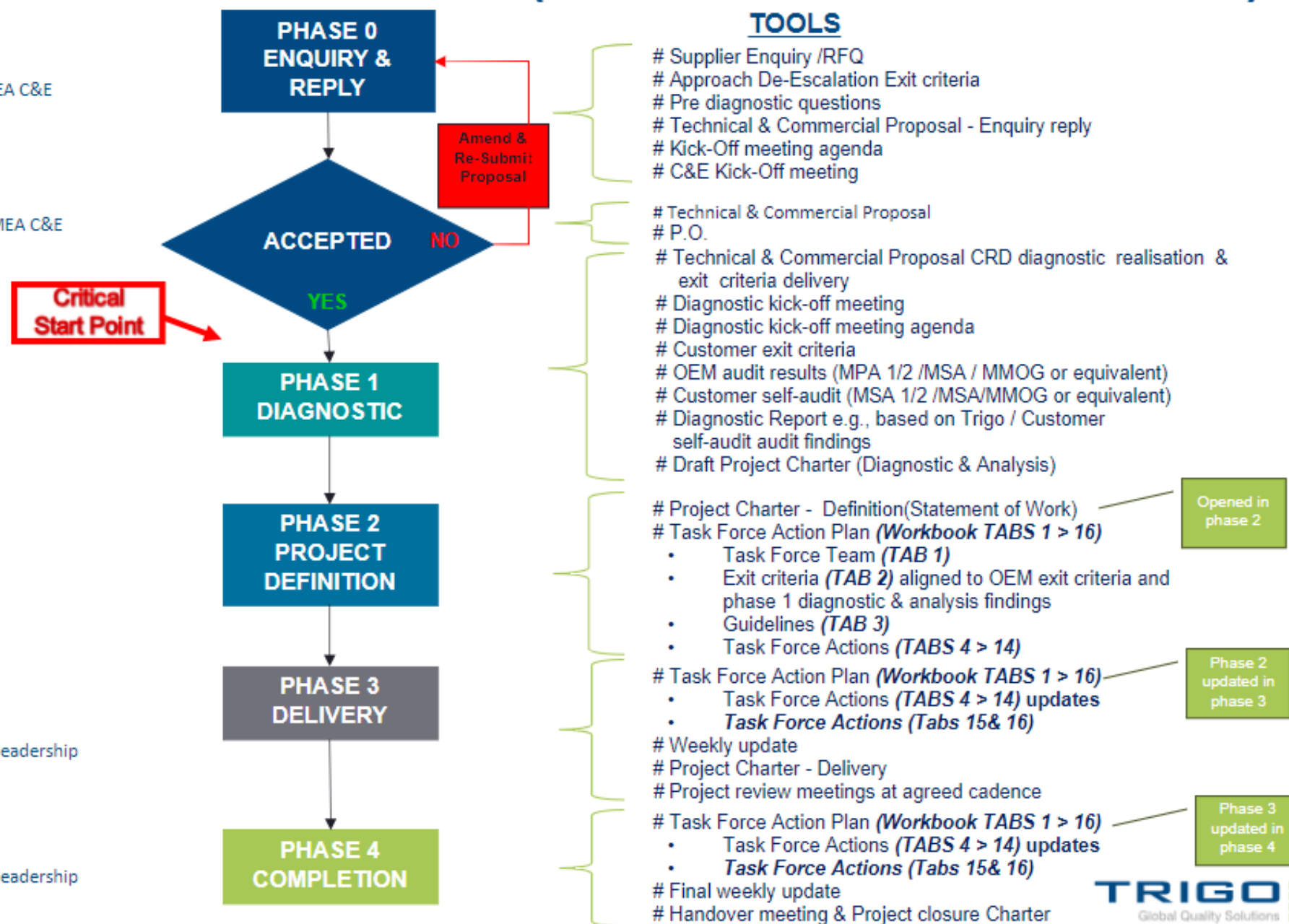
# Supplier SME  
# Trigo SME

# Supplier SME  
# Trigo SME  
# Customer SQE

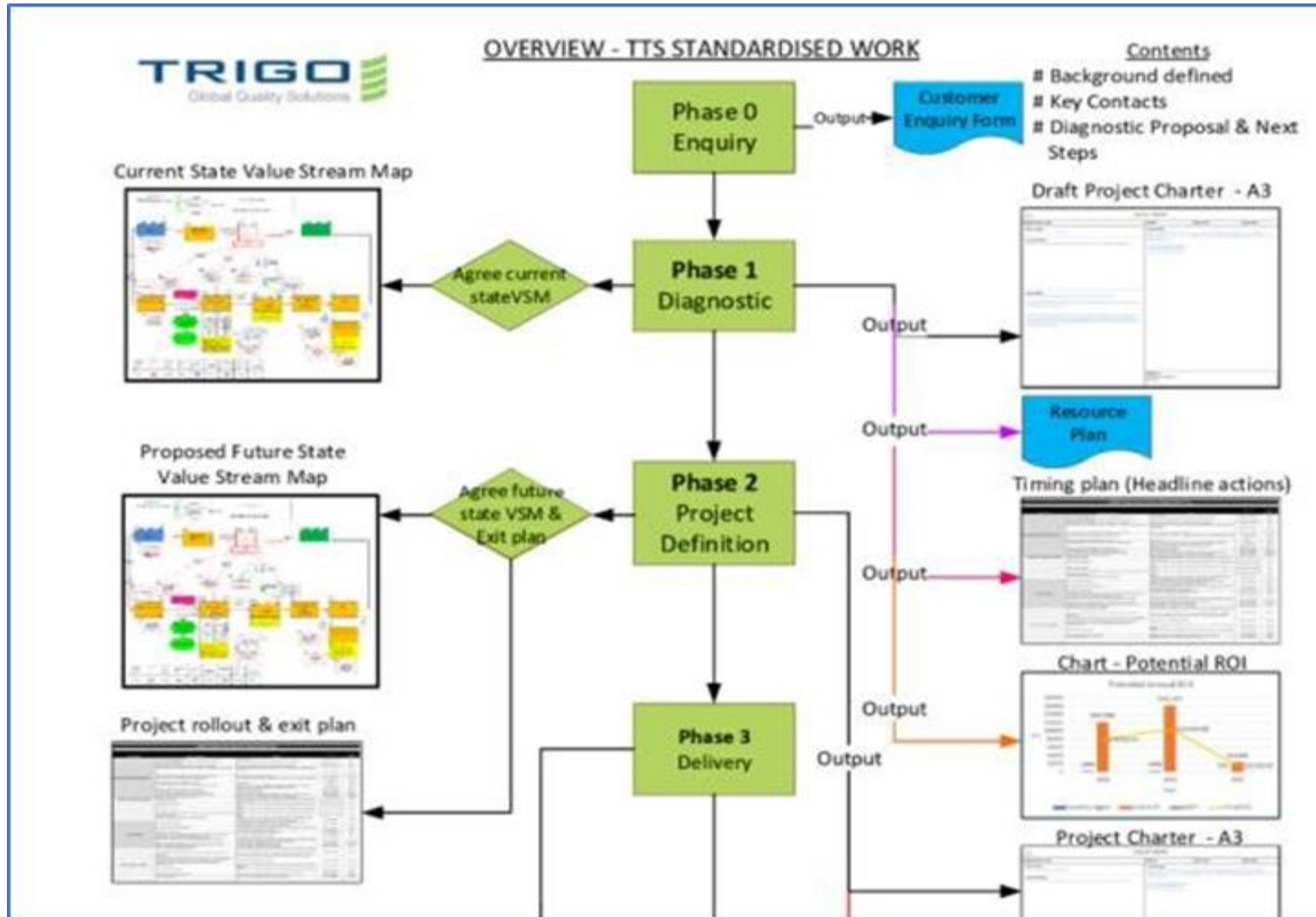
# Supplier SME  
# Trigo SME  
# Customer SQE  
# Customer, Supplier & Trigo C&E leadership

# Supplier SME  
# Trigo SME  
# Customer SQE  
# Customer, Supplier & Trigo C&E leadership

NB: Customer = OEM supplier



# STANDARISED FRAMEWORK



# GLOBAL OEM CUSTOMERS

## AEROSPACE



## AUTOMOTIVE



## HEAVY TRANSPORTATION



## OTHER





# WHY WORK WITH TRIGO...



## RESPONSIVE

We deliver rapid, effective and sustainable results every time.

## ACCOUNTABLE

Our Team takes full responsibility for mistakes we make. We guarantee our services and if things don't go right, we'll make sure we work hard to fix the issues until you are 100% satisfied.



## COST-EFFECTIVE

Our geographic footprint allows you to save on travel costs with representation in over 25+ countries.

## SCALABLE & FLEXIBLE

Our underlying business model offers the potential to meet your increased workload by easily adding resources as needed.



## MULTINATIONAL

Support is provided in the native language of your supplier.

Our team also has knowledge of the local environment and culture.

## STANDARDIZED

Worldwide common and standardized processes

Web-based customer portal and real-time data



## PROVEN PROCESSES

Our team of quality professionals follow proven methodologies and best practices.

## RELIABLE

Complete and timely reports, consistent communication and agreed upon objectives ensure both OEM and Supplier are always up-to-speed on the latest developments. We won't let you down. We are your partner in quality

## GLOBAL NETWORK OF LOCAL EXPERTS WITH UNIQUE INDUSTRY INSIGHTS

- Stellantis' certified provider for NSA audits
- Auditors with more than 30 years of experience
- Auditors certified by 4 OEMS (PSA, DM, FCA, Renault)
- Robust auditing processes supporting automotive customers
- Sr. Consultants focused on VDA, IATF and CSR



# TRAININGS & COURSES

## **RGPQP RENAULT – V1.0**

Industry: Automotive

Duration: 2 day(s)

Course Type: Onsite training, Online training

## **NEW APQP PPAP HARMONIZED STELLANTIS V2022**

Industry: Automotive

Duration: 2 day(s)

Course Type: Onsite training, Online training

## **ISO 9001:2015 INTRODUCTION AND TRANSITION STRATEGY**

Industry: General

Duration: 1

Course Type: Onsite training, Online training

Language: English

## **AUTOMOTIVE CORE TOOLS FOR INTERNAL AUDITORS**

Industry: Automotive

Duration: 2 day(s)

Course Type: Onsite training, Online training

Language: English

## **LAYERED PROCESS AUDIT**

Industry: Automotive

Duration: 1 day(s)

Course Type: Onsite training, Online training

# THANK YOU!



**Miguel Castro | Advanced Services**  
[miguelangel.castro@trigo-group.com](mailto:miguelangel.castro@trigo-group.com)  
+52 444-165-7860

**Lisuly Garnica | Advanced Services**  
[lisuly.garnica@trigo-group.com](mailto:lisuly.garnica@trigo-group.com)  
+52 444-165-0758

**CONTACTS**

