

**THOR**

**THOR**

# The Thor Group



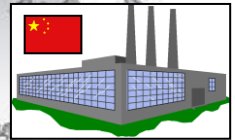
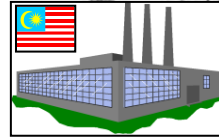
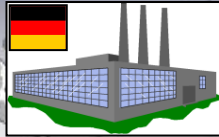
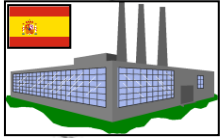
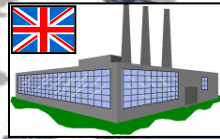
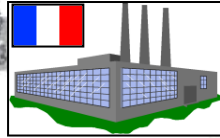
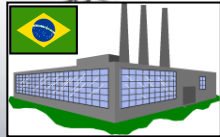
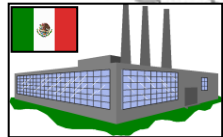
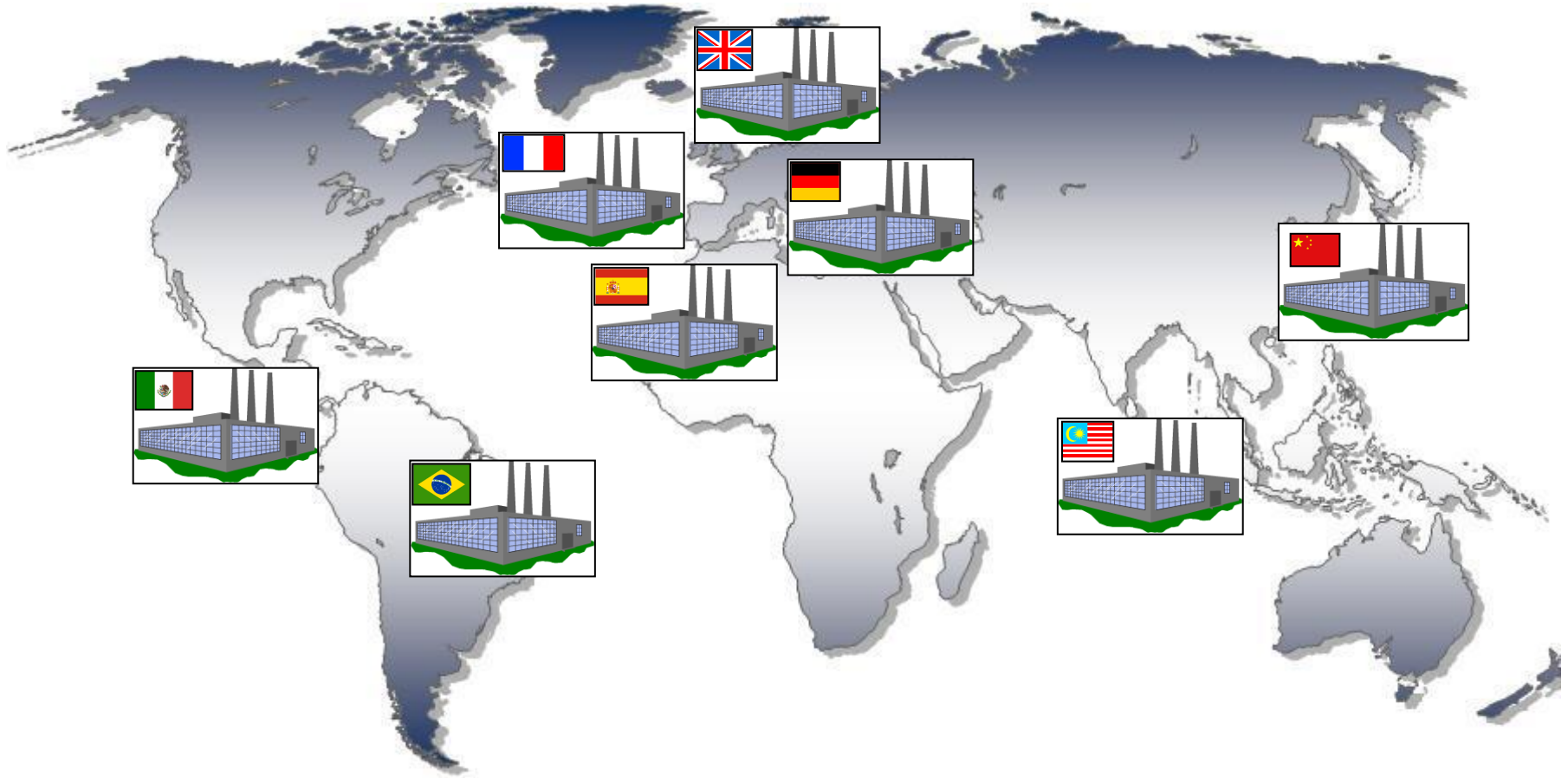
- Multinational speciality chemical manufacturers and suppliers
- Private company founded in 1959
- Three business units
- Group annual turnover: €400 million
- Number of employees: 1350



# Sales and Technical Service Facilities



# Production Sites



# Germany, Speyer

**THOR**



# Mexico, Querétaro

**THOR**



# China, Zhenjiang



Operational 2015

# Business Units

**THOR**

- Industrial Biocides  
**ACTICIDE®**
- Flame Retardants  
**AFLAMMIT®**
- Personal Care  
**Microcare®**





# ACTICIDE® Industrial Biocides



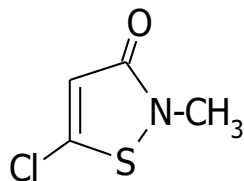
Leading manufacturer of biocides used to protect a wide range of products from spoilage by bacteria, fungi and algae

- Paints & plasters
- Detergents
- Polymer emulsions
- Construction chemicals
- Water treatment
- Metalworking fluids
- Pulp & paper
- Plastics

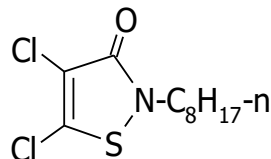
# ACTICIDE® Industrial Biocides



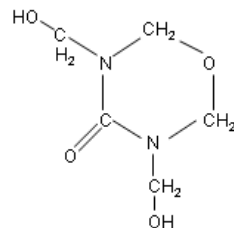
## Major Actives



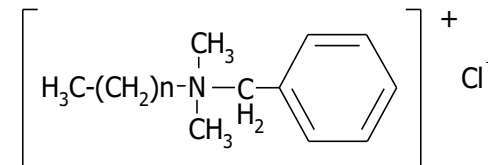
Chloromethyl-isothiazolinone



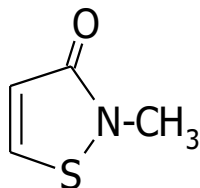
Dichlorooctyl-isothiazolinone



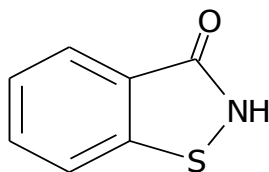
Formaldehyde donors



Benzalkonium-chloride



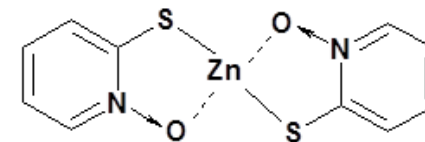
Methyl-isothiazolinone



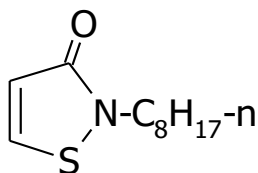
Benz-isothiazolinone



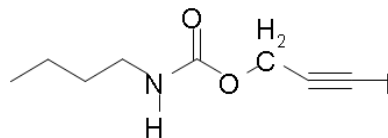
Silver



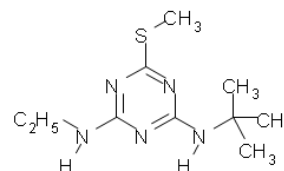
Zinc pyriithione



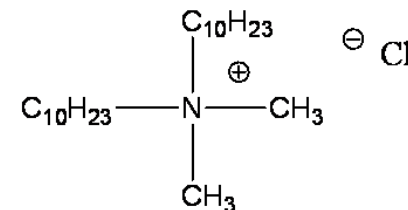
Octyl-isothiazolinone



3-Iodo-2-propynyl-butylcarbamate



Terbutryn



Didecyl-dimethyl-ammoniumchloride



## Performance Profile

- Research & Development
- Microbiology
- Analyses
- Plant Hygiene
- Thor IVT
- Regulatory Support & Quality Management

## Textile Applications

- Focus on environmentally preferred phosphorus based products
- Durable, semi-durable and non-durable finishes
- Application by impregnation, backcoating and reactive crosslinking techniques
- Specialist technical support

### Domestic Applications

Nightwear  
Soft Furnishings  
Upholstery



### Industrial Applications

Office, hotel, hospital furniture  
Aircraft, automobile interiors  
*(fabrics & leather)*  
Work wear

# AFLAMMIT® Flame Retardants



## Plastic & Paint Applications

- Speciality FRs based on phosphorus and nitrogen chemistry
- Extensive toolbox for non-halogenated formulations
- Thermoplastics, thermosets and elastomers
- Fire Protection Systems



- Building/Construction
- Electric/Electronic
- Transportation

MICRO CARE®

Extensive range of products designed to meet the exacting standards demanded by this industry

- Microcare® Preservatives specially formulated for both leave on and rinse off formulations
- Microcare® Quats for hair conditioning
- Microcare® Silicone range of skin and hair ingredients





- Dedicated Thor Personal Care facility at Compiègne, France
- Innovative ingredient solutions
- Enhanced safety assessments
- Global regulatory support
- Microbiological, analytical and formulatory testing capabilities
- Specialist application development laboratory
- THOR · IVT – *in vitro* toxicology

## Regulatory Support

- Product registrations worldwide
- Generation of toxicological data
- Labelling and packaging regulations

## Quality & Environmental Management Systems

- ISO 9001
- ISO 14001
- Laboratory Quality Accreditation





# Corporate Social Responsibility



- The highest priority is placed on the health and safety of employees, customers and surrounding communities
- Thor is committed to developing products and processes with minimum environmental impact
- We employ comprehensive safety and environmental management systems



Thank you for your attention!