

"TDT powered by D+P Dossier und  
Prüftechnik"



Automate  
Dosificate  
Measure  
Mount





## THIS IS WHAT WE VALUE

- On-site consultation
- Optimal design for the most efficient grease application
- Ideal recommendation for reliable monitoring of the applied medium
- Stock of spare parts in Mexico for immediate delivery
- Installation and after-sales service
- Turnkey projects
- Individually tailored systems
- Highest precision in the applied quantity
- Possibility of connection to an existing central control
- Quality made in Germany.



# EVERYTHING UNDER ONE ROOF

- ❑ Distribution Project Planning
- ❑ Construction / Development
- ❑ Hardware planning Control Technology / Programming
- ❑ Technical Editing
- ❑ Quality management
- ❑ CE-Coordinator
- ❑ Manufacturing
- ❑ Contract Manufacturing
- ❑ Mounting
- ❑ (mechanical/electric) Service and Start-up



# OVERVIEW DOSING TECHNOLOGY



MATERIAL SUPPLY



ROTARY GREASING  
UNIT



GREASE SHOT VALVE



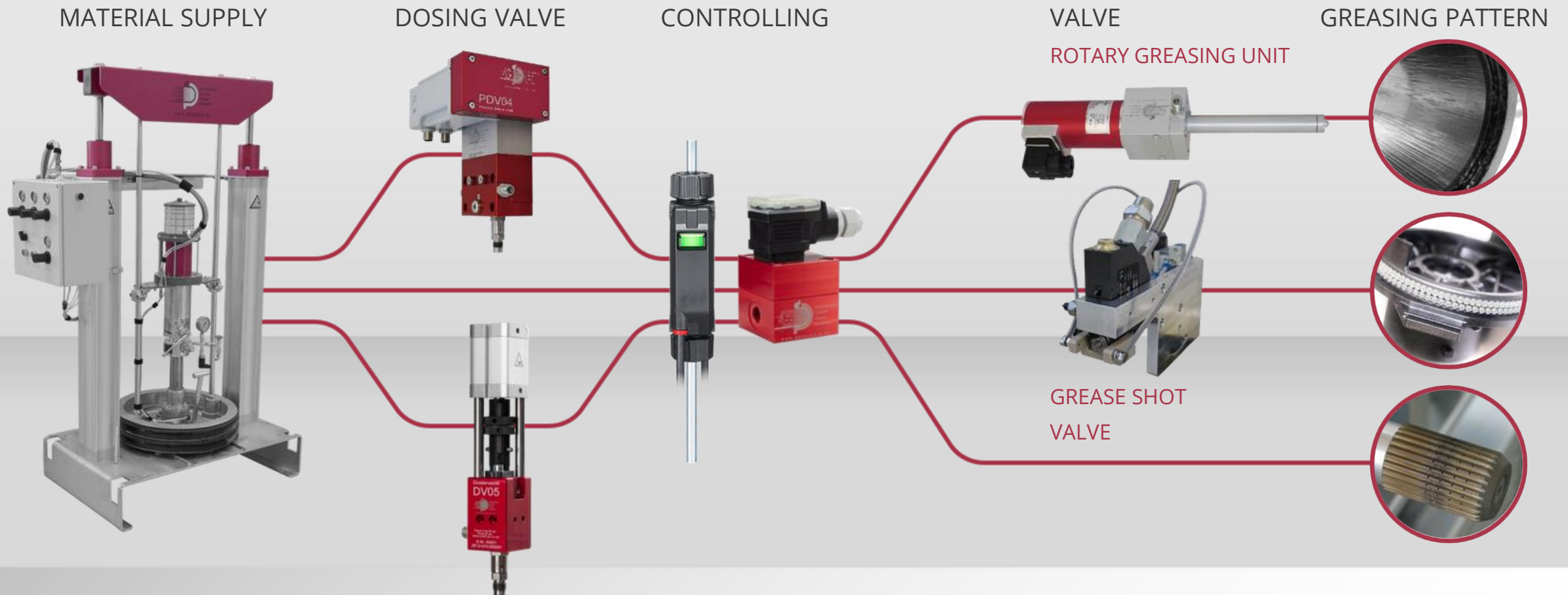
GREASING UNIT



ENDLESS DOSING

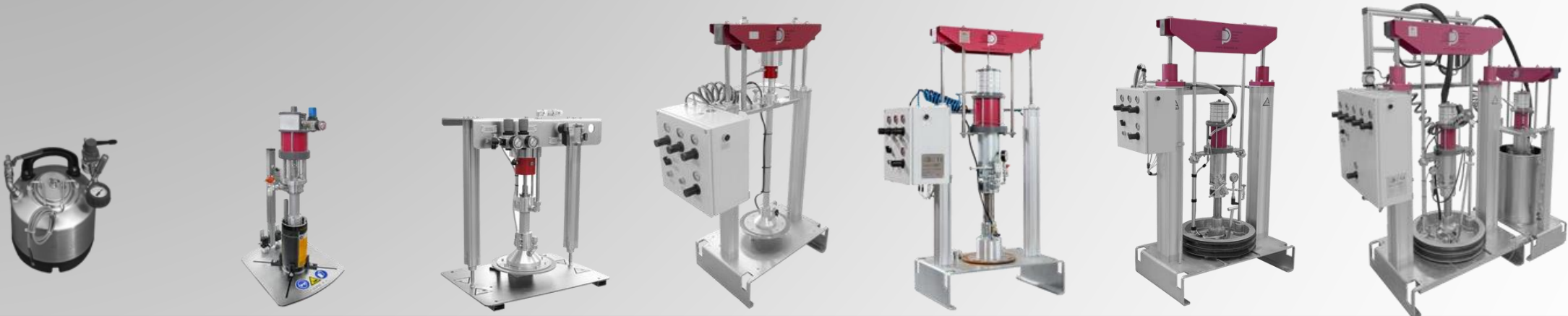


# DOSING & APPLYING TECHNOLOGY



# D+P BARREL PUMPS

- ▣ Pressure tanks
- ▣ Barrel pumps Small
- ▣ volume pumps
- ▣ Cartridge-System



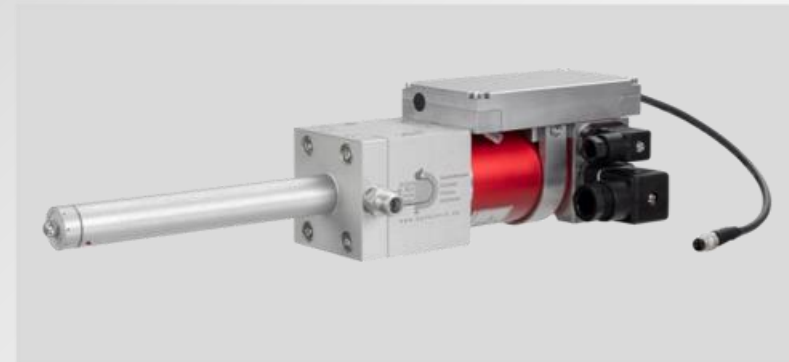
LOW  
VISCOSITY

HIGH VISCOSITY



# CONTROLLING

- ❑ Volume sensor Ultrasound
- ❑ Pressure sensor
- ❑ Rotary control Flow
- ❑ measurement system SMG



# DISPENSING CELL FOR

- Electrical 3-axis gantry for moving the metering unit (dispensing unit)
- Double 1K potting unit incl. material supply and flow sensor
- Dispensing needle monitoring by means of laser measuring unit
- Dual drawer system for continuous silicone oil dispensing
- Simple recipe management as well as clearly structured and user-friendly visualization







# INTEREST AROUSED? THEN QUICKLY GET ON THE PHONE!

Oscar Barrios

Email: [service@tecdeltatools.com](mailto:service@tecdeltatools.com)

Phone: 4428243677

[www.tdt-automation.com/](http://www.tdt-automation.com/)



## EXACTLY YOUR SOLUTION!

Your competent contact for  
automation, metering, measuring and  
assembly

