



**DIMACO METALMECANICA SA DE CV**

**Silao Gto, Mx**

**<http://www.dimaco-mx.com/>**

**Design / Manufacturing / Racks maintenance & refurbish,  
Containers, Dollies, work tables, Cars, Tooling.**



## Our History

DIMACO is a manufacturing and service company specialized in the design, manufacturing and repair of metallic containers to the material handling in the automotive industry.

DIMACO is a company that was created by the necessity in the area of a manufacturing and design racks company. Continental Teves was our first customer and at this moment we have business with General Motors, Plastic Omnium, PEMSA, Shaeffler, among others.

With more than 22 years of experience in the Design and Manufacturing of containers, DIMACO has become the best options in the area to the different companies that requires this products and services.

With a fast response, cost, quality and short time to provide design proposals and final products DIMACO maintain a competitive advantage over the others companies.

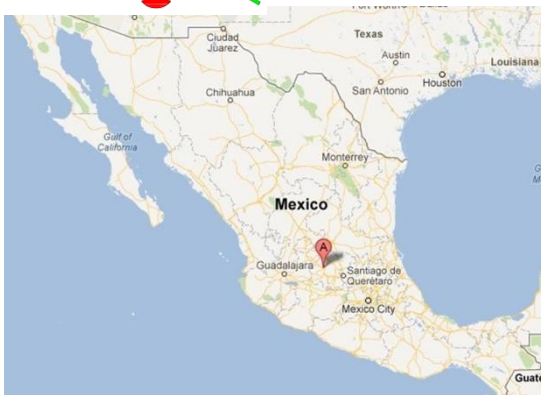
The administration and operation of DIMACO is managed by experienced staff with a background in manufacturing and lean process, designs, services and customer satisfaction.

We believe that the human resources are the principal pillar in the company and for this reason we keep in continuous development our human staff



## • **DIMACO METALMECANICA SA DE CV**

Carretera Estatal Silao-  
Romita Km 3+100  
Lucero de Ramales;  
36283 Silao Guanajuato,  
Mx



### Distance References

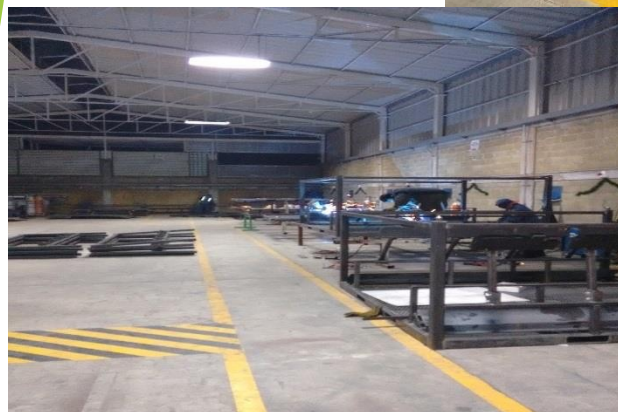
- 356 km (220 min) to México City
- 334 km (207 min) to Toluca México
- 283 km (175 min) to El Salto Jalisco:
- 160 km ( 99 min) to Ags Ags:
- 140 km (86 min) to Querétaro:
- 140 km ( 86 min) to San Luis Potosi
- 100 km ( 62 min) to Celaya Gto
- 120 km ( 115 min) to Apaseo Gto







## Our new Facilities in Silao 12,220 mts 2







Our machinery  
Prototype workshop



Laser cut workshop



Routers workshop



Plasma cut workshop



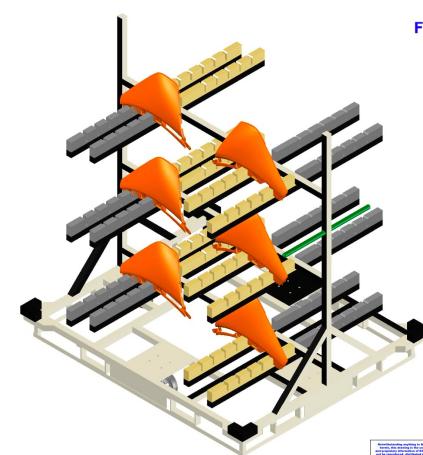
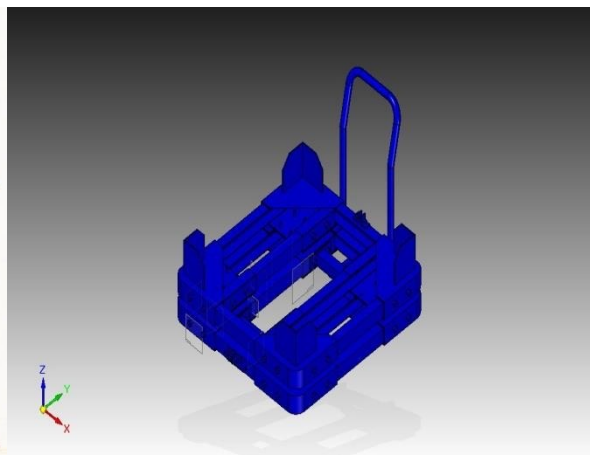
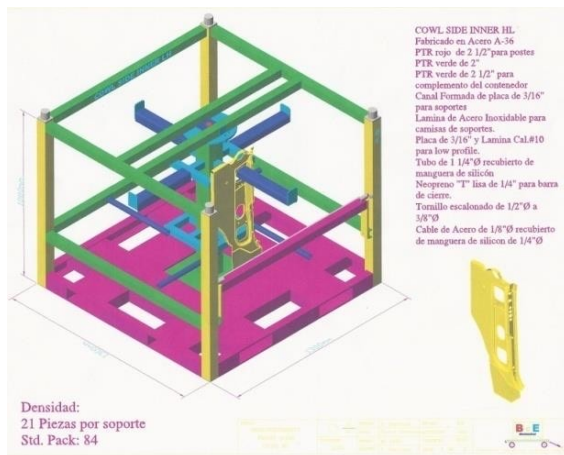
Machining workshop



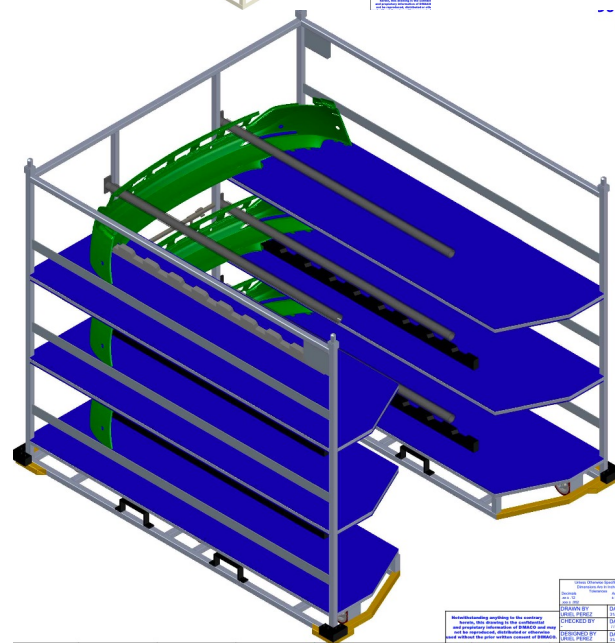
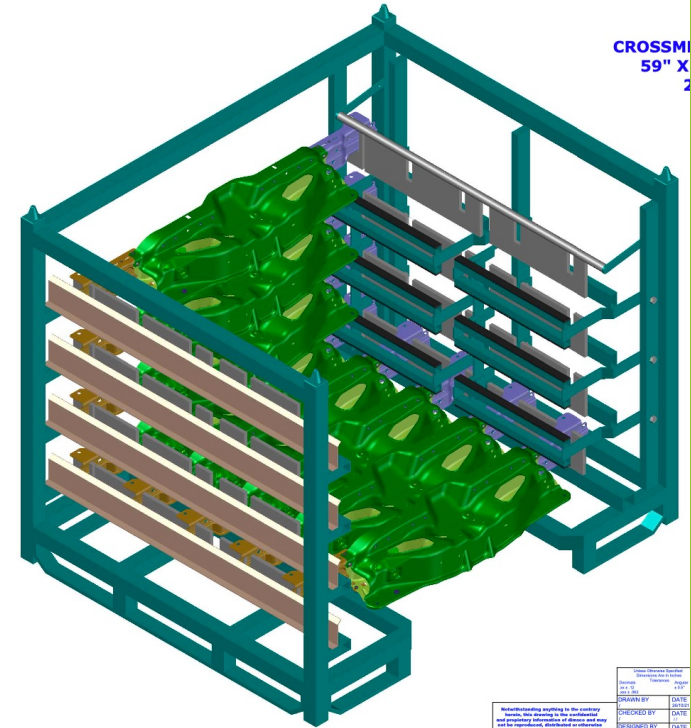




# Engineering, Design and building of prototypes



FF







## Production Racks and Sequenced



## Bag Rack

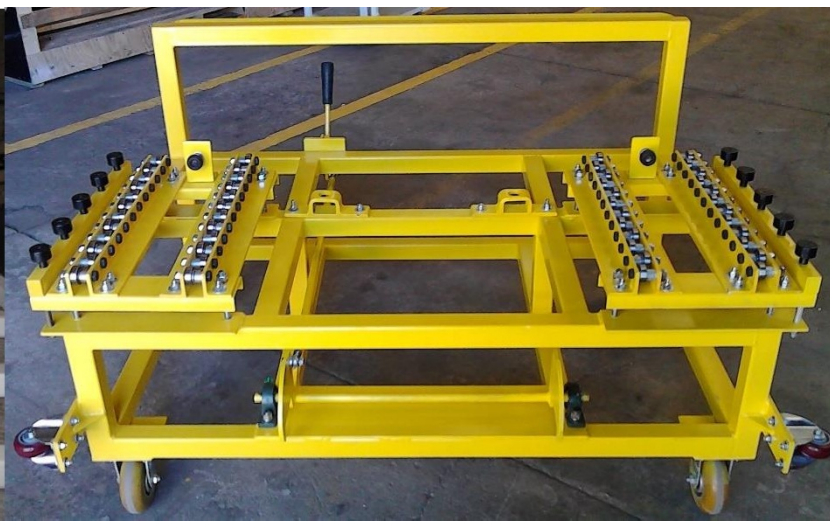


## MINOMIES





## Platforms





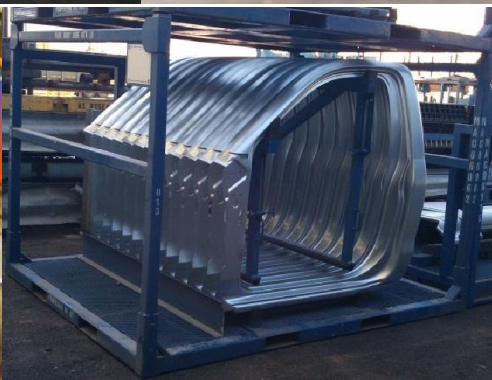
## Wooden Racks







## Preventive and Corrective Maintenance to Rack, Dollies and Platforms



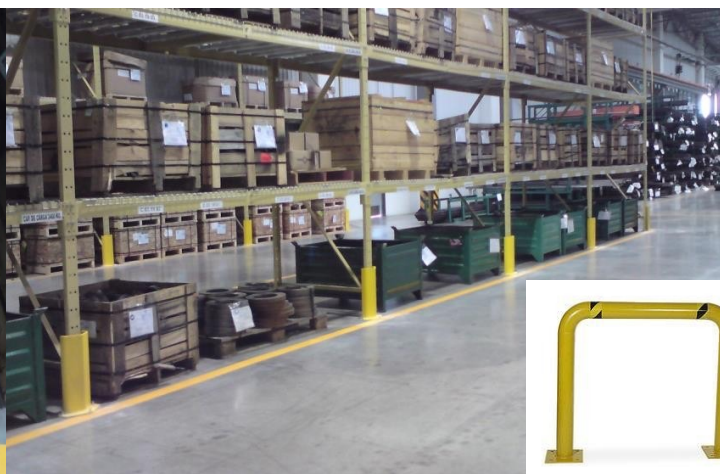




## Selective Racks to materials super market



### Manufacturing and installation of safety guards



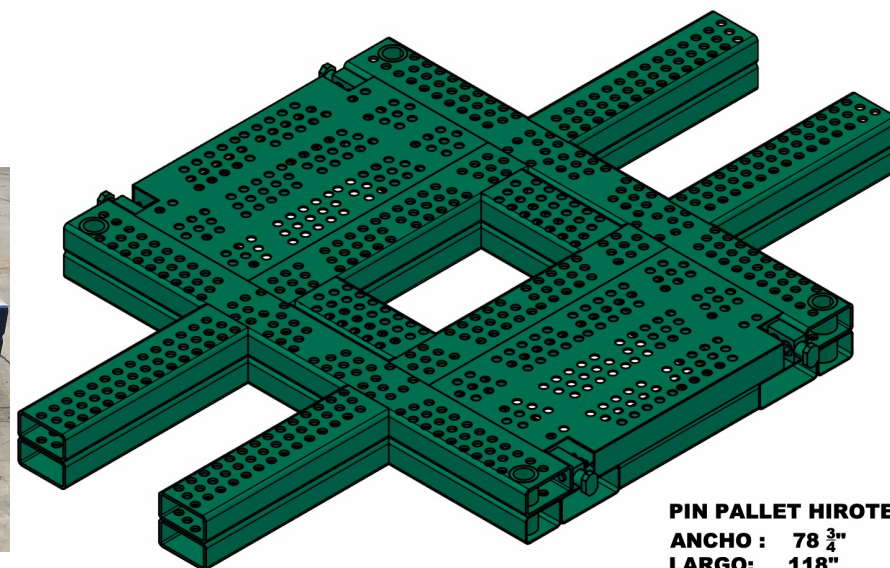




Burrs and scrap containers



PIN Pallets



Wire baskets to material handling







## Dollies and special work stations







## Special shelves and movil work station







## Special devices to quality inspection









## Lean Systems



## In Process Racks







## Design & manufacturing Hangers





## Dunnage and boxes plastic

EVA DUNNAGE



WOOD DUNNAGE







## Our Customers

CUSTOMER	LOCATION	CUSTOMER	LOCATION
General Motors de México	Silao Gto	Honda de México	Celaya Gto
	San Luis Potosi	THK Rhythm	Silao Gto
	Ramos Arizpe Coah	Sannohashi MFG México	Silao Gto
Pemsa	Celaya Gto	DJK Global	Qro, Qro
	Ramos Arizpe Coah	Akebono Breaks	Silao Gto
Plastic Omnium Autoexteriors	Silao Gto	Showa Autoparts México	Silao Gto
	Puebla	Kautex Textron de México	Silao Gto
	San Luis Potosi	North American Lighting México S.A. de C.V	San Luis Potosi
	Ramos Arizpe Coah	Corporación MITSUBA de México	Silao Gto
	Toluca Edo Mex	Tritech autoparts Mexicana SA de CV	Silao Gto
	Aguascalientes	Nishikawa Sealing Systems Mexico SA DE C	Silao Gto
	Carolina del Sur EUA	Kostal Mexicana SA de CV	Qro, Qro
Schaeffler de México	Irapuato Gto	Lear Corporation	Silao Gto
Martinrea Developments de México	Silao Gto	PSW Poliuretanos León	León Gto
Manufacturera Federal Eléctrica	Silao Gto	FEG de Querétaro SA de CV	Santa Rosa, Qro
VCST de México	Leon Gto	Hirotec Mexico	Silao Gto
HFI de México	Romita Gto	Hirotec Mexico	San Luis Potosi
Freudenberg-NOK de México	El Márquez Qro	Toyota	Apaseo, Gto
Samot Industria Mecánica	Silao Gto	Flex & Gates	San Jose Iturbide, Gto
PTI QCS	Silao Gto	Pine Valley	Leon, Guanajuato
CGS Automotive de México	Silao Gto	Grupo Antolin Silao	Silao, Gto
Instituto de Salud Pública del Estado de Gto	Gto, Gto	Grupo Antolin Michigan Inc	Michigan, USA
IPC Piqua de México	Silao Gto	Android de Mexico	Silao, Gto
Magna Cosma Internacional	Celaya Gto	Android de Mexico	Cuautitlan, CDMX
Marquardt México	Irapuato Gto		
San Luis Metal Forming	San Luis Potosi		
Collis de México	Irapuato Gto		
Stant de México	San Miguel de Allende Gto		





## *Facilities Location and Contacts*

### ➤ **Facility Silao 1:**

Carretera Silao-Romita Km 3+100  
Col. Lucero de Ramales  
36283 Silao, Guanajuato.



Click Here:  
[Google Maps.](#)



[Follow me Directorio Automotriz Guanajuato](#)



[LinkedIn Dimaco](#)

Contact:

Moisés Peña

Móvil: 55 179 33 22 3

Ofic: 01(472) 722 37 32

[E mail: moises.pena@dimaco-mx.com](mailto:moises.pena@dimaco-mx.com)